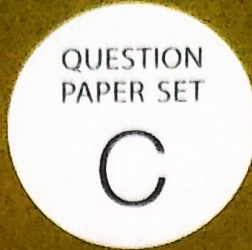


SOF NATIONAL SCIENCE OLYMPIAD 2025-26

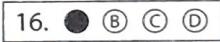


Total Questions : 35

Time : 1 hr.

Guidelines for the Candidate

- 1. You will get additional ten minutes to fill up information about yourself on the OMR Sheet, before the start of the exam.
2. Write your Name, School Code, Class, Section, Roll No. and Mobile Number clearly on the OMR Sheet and do not forget to sign it.
3. The Question Paper comprises three sections: Logical Reasoning (5 Questions), Science (25 Questions) and Achievers Section (5 Questions)
4. All questions are compulsory. There is no negative marking. Use of calculator is not permitted.
5. There is only ONE correct answer. Choose only ONE option for an answer.
6. To mark your choice of answers by darkening the circles on the OMR Sheet, use HB Pencil or Blue / Black ball point pen only.
7. Rough work should be done in the blank space provided in the booklet.
8. Return the OMR Sheet to the invigilator at the end of the exam.
9. Please fill in your personal details in the space provided before attempting the paper.
10. SOF - Techfest IIT Bombay Innovation Challenge - Open for class 8, 9 and 10. For more details, please visit : www.sofworld.org



Name:.....
SOF Olympiad Roll No.:..... Contact No.:.....

DO NOT OPEN THIS BOOKLET UNTIL ASKED TO DO SO

Table with 5 columns: THE WORLD'S BIGGEST OLYMPIADS, 27 Years of Trust, 99,499+ Schools, 72 Countries, 8.1+ Crores Assessments, 8 Olympiads

## LOGICAL REASONING

- 1 Sahil took a unit test on third Friday of each month in his school. On which date will Sahil's unit test take place in October 20XX?

October 20XX						
Sun	Mon	Tue	Wed	Thu	Fri	Sat
				1	2	3
4	5	6	7	8	9	10
11	12	13	14	15	16	17
18	19	20	21	22	23	24
25	26	27	28	29	30	31

- A. 9<sup>th</sup> October  
 B. 16<sup>th</sup> October  
 C. 23<sup>rd</sup> October  
 D. 27<sup>th</sup> October

- 2 Select the odd one out.



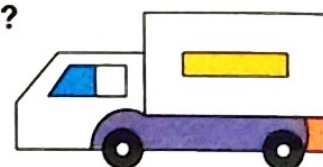
- 3 2 groups of \_\_\_\_\_ sunflowers each can be formed from the given sunflowers.



- A. 4                      B. 6                      C. 5                      D. 3

- 4 Which of the following shapes is NOT present in the given figure?

- A. Rectangle                      B. Triangle  
 C. Circle                              D. Square



- 5 The position of encircled drum is \_\_\_\_\_.



- A. Third from the left                      B. Third from the right  
 C. Second from the right                      D. Fifth from the left

-----  
 SPACE FOR ROUGH WORK

## SCIENCE

6 We get \_\_\_\_\_ from the plant shown in the given picture.

- A. Cooking oil
- B. Wood
- C. Eraser
- D. Coffee



Mustard plant

7 Refer to the given relationship and select the option that correctly identifies X.

Table : Man-made thing :: X : Natural non-living thing

- A. Butterfly
- B. Tree
- C. River
- D. Television

8 Which of the following statements is correct about the animal shown in the given picture?

- A. It is the largest animal on land.
- B. It can live without eating food and drinking water for a long time.
- C. It builds a burrow to live in.
- D. It is the largest animal in the world.



9 Unscramble the given letter groups to get the name of a plant whose seeds we eat as pulses.

- A. THWEA
- B. NICUM
- C. DIKYEN BNEA
- D. EZMAI

10 Match the columns and select the correct option.

- | Column I<br>(Animal)          | Column II<br>(Baby)           |
|-------------------------------|-------------------------------|
| (a) Sheep                     | 1. Kid                        |
| (b) Goat                      | 2. Joey                       |
| (c) Lion                      | 3. Lamb                       |
| (d) Kangaroo                  | 4. Cub                        |
| A. (a)-2, (b)-1, (c)-4, (d)-3 | B. (a)-1, (b)-2, (c)-3, (d)-4 |
| C. (a)-4, (b)-3, (c)-2, (d)-1 | D. (a)-3, (b)-1, (c)-4, (d)-2 |

SPACE FOR ROUGH WORK

11 Read the given statement.

The 1 is a place in the house where we cook food, and it usually has a 2 and 3.

1, 2 and 3 respectively are

- A. Dining room, Television, Bed  
B. Kitchen, Stove, Utensils  
C. Kitchen, Sofa, Chair  
D. Dining room, Table, Chair.

12 Unscramble the given letters to find out which of these Rajat cannot sense.

- A. ORUCLO  
B. EXUTTER  
C. OSNDU  
D. SATTE



13 Riya's hands got dirty after playing in the park. Before eating, she should

- A. Wash her hands with soap  
B. Wipe her hands on her clothes  
C. Wipe her hands on the curtains  
D. Rub her hands on the table mat.

14 Which of the following statements is INCORRECT?

- A. Air is needed for burning.  
B. Water exists only in liquid form on Earth.  
C. Air gives shape to a balloon, when air is blown into it.  
D. Plants breathe through pores present on their leaves.

15 'Little Bear' is the name of a

- A. Star  
B. Planet  
C. Spacecraft  
D. Constellation.

16 The given picture shows Zoya on her way to school. What type of day is it?



SPACE FOR ROUGH WORK

17 A sailboat needs \_\_\_\_\_ to move.

- A. Only water  
B. Only air  
C. Both air and water  
D. None of these



18 The ball shown in the given picture is moving because \_\_\_\_\_.

- A. It is a living thing  
B. It has been kicked or pushed  
C. It is breathing in air  
D. It is growing



19 Starting from the first letter, cross out every alternate letter and identify the name of the tallest animal on land.

- A. BCPARMOEGLH  
B. PKRACNDGHAPRCOTOA  
C. CEBLDENPQHWASNITV  
D. BGHIURSAPFEFAET

20 Jaya made four pairs of food items, each consisting of one energy-giving food and one body-building food. Identify the INCORRECT pair she made while doing so.

- A. Rice, Milk  
B. Bread, Cheese  
C. Butter, Egg  
D. Chapati, Apple

21 Your father's brother's wife will be your \_\_\_\_\_.

- A. Grandmother  
B. Cousin sister  
C. Aunt  
D. Niece

22 Moving air is called 1 and very fast-moving air with rain and thundering is called 2. 1 and 2 respectively are

- A. Storm, Breeze  
B. Wind, Storm  
C. Breeze, Wind  
D. None of these.

23 Select the correct match of the road sign and its meaning.

- A.  — No honking  
B.  — School ahead  
C.  — No overtaking  
D.  — No parking

24 Select the option that correctly identifies the young ones of animals P and Q shown in the given pictures.

- | P         | Q     |
|-----------|-------|
| A. Joey   | Kid   |
| B. Calf   | Lamb  |
| C. Infant | Foal  |
| D. Cub    | Puppy |



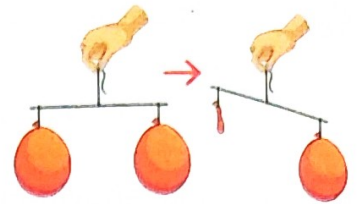
P



Q

SPACE FOR ROUGH WORK

- 25 Riya blows air into two balloons and places one on each side of a scale. Then she lets the air out from one of the balloons, and the scale tilts as shown in the given figure. What does this activity show?



- A. Air helps in drying  
 B. Air has weight  
 C. Air is needed for burning  
 D. Air moves fast

- 26 Select the option that correctly completes the given table.

Man-made things	Natural non-living things
Eraser	Soil
Soft toy	Y
X	Rock

- A. X-Chair, Y-Sun  
 B. X-Cockroach, Y-Money plant  
 C. X-Bottle, Y-Safety pin  
 D. X-Moon, Y-Pen

- 27 Poonam encircled odd members in the following animal groups based on their size but made one mistake. Find out the group in which she made the mistake.

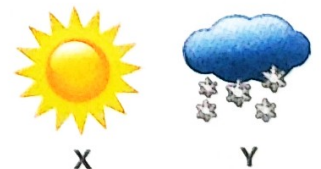
- A. Cat, Dog, Elephant  
 B. Great white shark, Giraffe, Frog  
 C. Rat, Mole, Kangaroo  
 D. Squirrel, Yak, Camel

- 28 Which of the following is a common characteristic of a grape plant?

- A. It grows tall and has a thick trunk.  
 B. It has a weak stem which climbs upright with the help of a support.  
 C. It has many branches growing from the base.  
 D. It has a short and soft green stem.

- 29 Weather forecast of days X and Y are shown in the given figures. Select the option that correctly identifies the appropriate clothes that should be worn on these days.

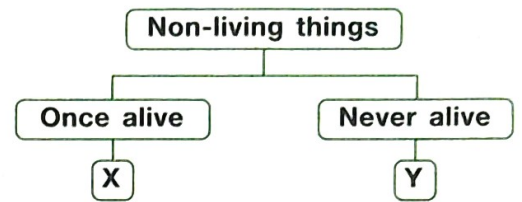
- | X                         | Y                      |
|---------------------------|------------------------|
| A. T-shirt and shorts     | Jacket and woollen cap |
| B. Sweater and scarf      | Raincoat and gumboots  |
| C. Woollen cap and gloves | T-shirt and shorts     |
| D. Jacket and boots       | Cotton dress           |



SPACE FOR ROUGH WORK

- 30 Study the given classification chart and select the option that correctly identifies X and Y.

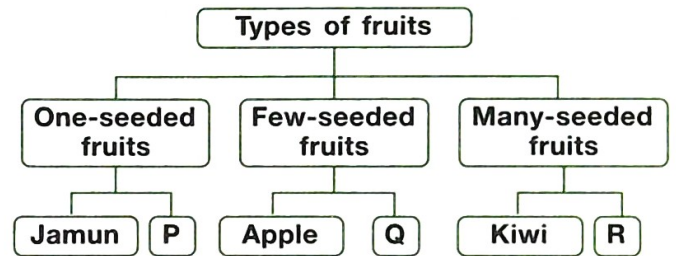
X	Y
A. Parrot	Car
B. Tree	Sun
C. Wooden chair	Clock
D. Cat	Moon



### ACHIEVERS SECTION

- 31 Study the given classification chart and select the correct option to fill empty spaces P, Q and R.

P	Q	R
A. Pear	Watermelon	Guava
B. Cherry	Pear	Pomegranate
C. Peach	Guava	Cherry
D. Orange	Watermelon	Litchi



- 32 Refer to the given word grid and answer the following question. Names of how many items that are found in a first aid box are hidden in the given word grid?

- A. 5  
B. 4  
C. 3  
D. 2

A	T	Q	H	Q	G	P
B	H	B	I	S	H	O
G	E	H	J	C	I	I
H	R	T	G	I	U	N
T	M	H	P	S	Y	T
C	O	R	S	S	T	M
V	M	Q	O	O	D	E
Q	E	P	I	R	V	N
E	T	M	Z	S	K	T
R	E	N	D	B	L	C
T	R	L	M	C	M	D

- 33 Refer to the given word chop table and select the INCORRECT option regarding it.

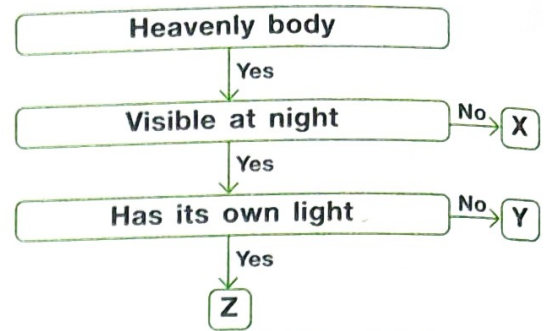
It is	Box number
A. The main source of water on Earth	– 2, 7
B. The gaseous form of water	– 1, 3, 4, 6, 8
C. A large water body with salty water	– 13, 14
D. A water body with freshwater	– 12, 16

1	2	3	4
WAT	RA	ER	VA
5	6	7	8
OCE	PO	IN	UR
9	10	11	12
AN	MI	LL	LA
13	14	15	16
RI	VER	OB	KE

SPACE FOR ROUGH WORK

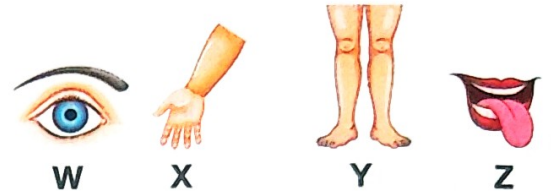
34 Refer to the given flow chart and select the option that correctly identifies X, Y and Z.

X	Y	Z
A. Sun	Star	Moon
B. Moon	Star	Sun
C. Star	Moon	Sun
D. Sun	Moon	Star



35 Select the correct statement regarding the body parts W, X, Y and Z shown in the given figures.

- A. W helps us to see; X helps us to hold things; Y helps us to walk; and Z helps us to taste.
- B. W helps us to hear; X helps us to taste; Y helps us to see; and Z helps us to walk.
- C. W helps us to smell; X helps us to write; Y helps us to eat; and Z helps us to jump.
- D. W helps us to hold things; X helps us to hear; Y helps us to see; and Z helps us to walk.



SPACE FOR ROUGH WORK



For latest updates & information, please like our Facebook page ([www.facebook.com/sofworld](http://www.facebook.com/sofworld)) or register on [www.sofworld.org/subscribe-updates.html](http://www.sofworld.org/subscribe-updates.html)

For Level 1 and Level 2 preparation material / free sample papers, please log on to [www.mtg.in](http://www.mtg.in)



Head Office: Plot 99, Sector 44 Institutional area, Gurugram -122 003 (HR), India  
 Email: [info@sofworld.org](mailto:info@sofworld.org) | Website: [www.sofworld.org](http://www.sofworld.org)